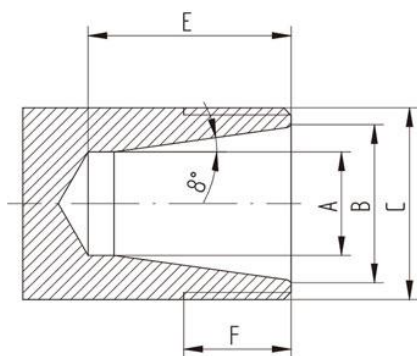


USER GUIDE

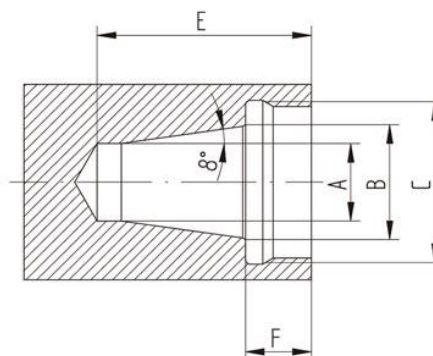
Elastic chuck
HN2020-2

The size of the ER collet cavity in the machine spindle and the matching nut

ER Model	Clamping diameter [mm]											size [mm]				
		ER	ERC	ERB	ERBC	ERM	ERMC	ERMx	ERMxC	AX	AXC	A	B	C	E	F
11	0.5–7.0	•	•	–	–	–	–	–	–	–	–	7.5	11	M 14 x 0.75	17	10
16	0.5–10.0	•	•	•	•	–	–	–	–	–	–	10.5	16	M 22 x 1.5	22	13
20	0.5–13.0	•	•	•	•	–	–	–	–	–	–	13.5	20	M 24 x 1.5	26.5	13.5
25	0.5–17.0	•	•	•	•	–	–	–	–	–	–	18.0	25	M 32 x 1.5	29	14
32	1.0–22.0	•	•	•	•	–	–	–	–	–	–	23.5	32	M 40 x 1.5	34	16
40	2.0–30.0	•	•	•	•	–	–	–	–	–	–	30.5	40	M 50 x 1.5	38	17
50	4.0–36.0	•	•	•	•	–	–	–	–	–	–	38	50	M 64 x 2	48	24
8	0.5–5.0	–	–	–	–	•	–	•	–	–	–	5.2	8	M 10 x 0.75	13	8
11	0.5–7.0	–	–	–	–	•	•	•	•	–	–	7.5	11	M 13 x 0.75	17	8.5
16	0.5–10.0	–	–	–	–	•	•	•	•	–	–	10.5	16	M 19 x 1	22	13
20	0.5–13.0	–	–	–	–	•	•	•	•	–	–	13.5	20	M 28 x 1.5	26.5	13.5
25	0.5–17.0	–	–	–	–	•	•	•	•	–	–	18	25	M 30 x 1	29	14
11	0.5–7.0	–	–	–	–	–	–	–	–	•	–	7.5	11	M 18 x 1	23	7
16	0.5–10.0	–	–	–	–	–	–	–	–	•	•	10.5	16	M 24 x 1	32	10
20	0.5–13.0	–	–	–	–	–	–	–	–	•	•	13.5	20	M 28 x 1.5	37.5	11
25	0.5–17.0	–	–	–	–	–	–	–	–	•	•	18	25	M 32 x 1.5	41	12
32	1.0–22.0	–	–	–	–	–	–	–	–	•	•	23.5	32	M 40 x 1.5	48	12
40	2.0–30.0	–	–	–	–	–	–	–	–	•	•	30.5	40	M 50 x 1.5	54	16



Standard ER cavity



ER AX and ER AXC cavity

ER collet size

Model (MM)		size (MM)									
D2	d	D1	D2	D3	D4	L	L1**	L2	L3	L4	drawing
ER 8	1.0-2.5	8.5	8	6.5	4	13.6	2.98	1.2	1.5	6.	1
ER 8	3.0-5.0	8.5	8	6.5	-	13.6	2.98	1.2	1.5	-	2
ER 11	1.0-2.5	11.5	11	9.5	5	18	3.8	2	2.5	9	3
ER 11	3.0-7.0	11.5	11	9.5	-	18	3.8	2	2.5	-	4
ER 16	1.0-1.59	17	16	13.8	7.5	27.5	6.26	2.7	4	13	3
ER 16	2.0-4.76	17	16	13.8	7.5	27.5	6.26	2.7	4	10	3
ER 16	5.0-10.0	17	16	13.8	-	27.5	6.26	2.7	4	-	4
ER 16	9.5-10.0	17	16	13.8	-	26*	6.26	2.7	4	-	4
ER 20	1.0-1.59	21	20	17.4	9	31.5	6.36	2.8	4.8	16	3
ER 20	2.0-6.50	21	20	17.4	9	31.5	6.36	2.8	4.8	13	3
ER 20	7.0-13.0	21	20	17.4	-	31.5	6.36	2.8	4.8	-	4
ER 25	1.0-1.59	26	25	22	12	34	6.66	3.1	5	18	3
ER 25	2.0-7.50	26	25	22	12	34	6.66	3.1	5	15	3
ER 25	8.0-17.0	26	25	22	-	34	6.66	3.1	5	-	4
ER 32	2.0-4.76	33	32	29.2	15	40	7.16	3.6	5.5	20	3
ER 32	5.0-7.5	33	32	29.2	15	40	7.16	3.6	5.5	15	3
ER 32	8.0-22.0	33	32	29.2	-	40	7.16	3.6	5.5	-	4
ER 40	3.0-4.76	41	40	36.2	20	46	7.66	4.1	7	24	3
ER 40	5.0-8.5	41	40	36.2	20	46	7.66	4.1	7	18	3
ER 40	9.0-30.0	41	40	36.2	-	46	7.66	4.1	7	-	4
ER 50	6.0-10.0	52	50	46	20	60	12.6	5.5	8.5	32	3
ER 50	12.0-36.0	52	50	46	-	60	12.6	5.5	8.5	-	4

The maximum diameter is 27.5, depending on the order quantity. L1 refers to the length of the chuck exposed outside the handle

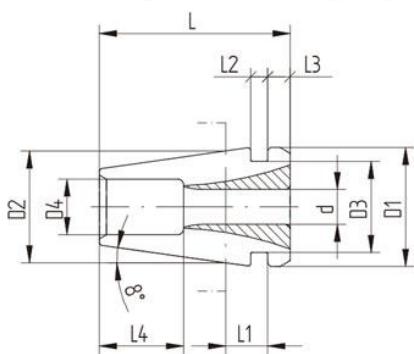


Figure 1

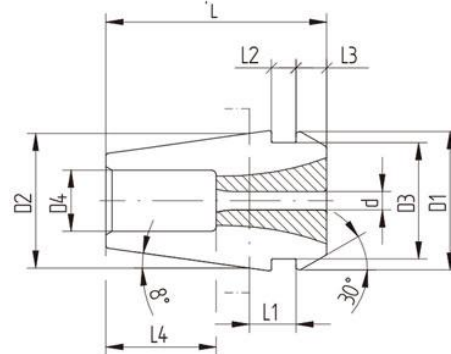


Figure 2

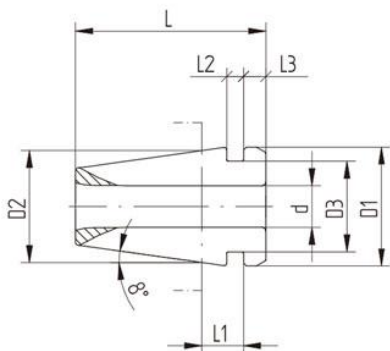


Figure 3

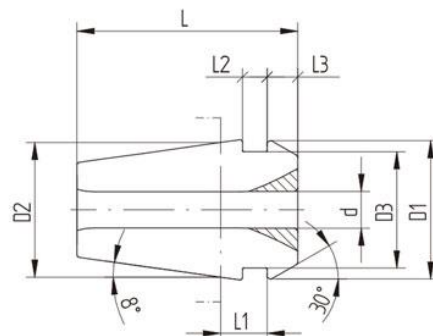


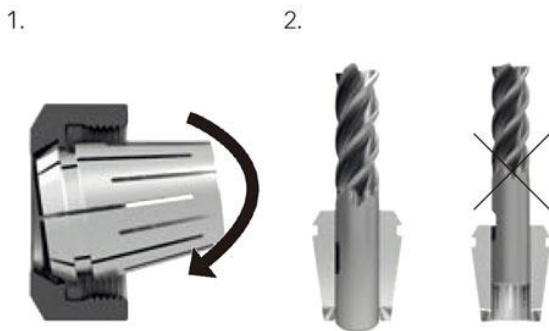
Figure 4

Extend the service life of collets and tools

By reducing the vibration of the machining center,
To improve the surface roughness and extend the life of the tool.

Correct installation

First, push the collet in the direction indicated by the arrow until you hear a click. Secondly, the insertion length of the tool should not be less than 2/3 of the clamping length of the collet.



Hear a click

When you hear the click, there is no need to tighten the torque wrench.



For more information about HN-NC, please refer to the official website.

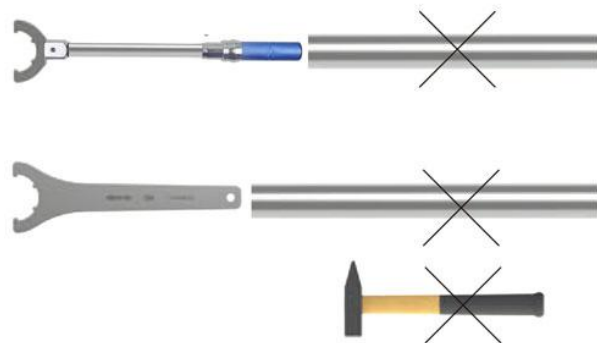
Please use HN-NC wrench

Please use the following special wrenches to install the chuck. It is recommended to use a torque wrench, and the torque value can be seen during use.



You can use conventional wrenches. Please note that currently only the torque wrench will display the torque value used, which is easy to operate and use.

Do not use any type of extension rod or hammer



Recommended ER nut tightening torque

Model	Ø [mm]	Ø [inch]	ER/ERC		ERB/ERBC		ERM/ERMC		ERMx/ERMxC		ERAx/ERAxC		ER MS
			ER*	ER-GB	ER*	ER-GB	ER*	ER-GB	ER*	ER-GB	ER*	ER-GB	ER*
			Spring chuck [Nm]						Spring chuck [Nm]				
ER 8 MB	0.2–0.9	0.0078–0.035	–	–	–	–	6	–	6	–	–	–	6
ER 8	1.0–5.0	0.039–0.196	–	–	–	–	6	–	6	–	–	–	6
ER 11 MB	0.2–0.9	0.0078–0.035	8	–	–	–	8	–	8	–	8	–	8
ER 11	1.0–2.9	0.039–0.098	8	8	–	–	8	8	8	8	8	8	10
	3.0–7.0	0.118–0.256	24	16	–	–	16	13	16	13	24	21	10
ER 16 MB	0.2–0.9	0.0078–0.035	8	–	–	–	8	–	8	–	8	–	12
ER 16	1.0	0.039	8	–	6.4	–	8	–	8	–	8	–	12
	1.5–3.5	0.059–0.138	20	–	16	–	20	–	20	–	20	–	20
	4.0–4.5	0.157–0.177	40	40	32	32	24	–	24	–	40	40	20
	5.0–10.0	0.197–0.394	56	44	56	44	24	–	24	–	40	40	–
ER 20	1.0	0.039	16	–	12	–	16	–	16	–	16	–	12
	1.5–6.5	0.059–0.256	32	32	24	24	28	28	28	28	52	35	18.4
	7.0–13.0	0.276–0.512	80	35	80	24	28	28	28	28	52	35	18.4
ER 25	1.0–3.5	0.059–0.138	24	–	20	–	24	–	24	–	24	–	–
	4.0–4.5	0.157–0.177	56	56	48	48	32	32	32	32	56	56	–
	5.0–7.5	0.196–0.295	80	80	72	72	32	32	32	32	80	80	–
	8.0–17.0	0.315–0.669	104	80	104	79	32	32	32	32	80	80	–
ER 32	2.0–2.5	0.078–0.098	24	24	20	–	–	–	–	–	24	–	–
	3.0–7.5	0.118–0.291	136	136	128	90	–	–	–	–	104	90	–
	8.0–22.0	0.315–0.787	136	136	136	90	–	–	–	–	104	90	–
ER 40	3.0–26.0	0.118–1.023	176	176	176	176	–	–	–	–	128	128	–
ER 50	6.0–36.0	0.236–1.417	240	300	240	300	–	–	–	–	–	–	–

Including ER standard collet chuck and ER-UP high precision collet chuck

Haina Precision Cutting Technology Co., Ltd.

Haina Precision Machinery Co., Ltd.

Address: No. 3, Daqing Road, Lian District, Xi' an, China

Phone: +86 029-81333283 14729292929

Email: nc360@vip.163.com

Website: www.nc360.net